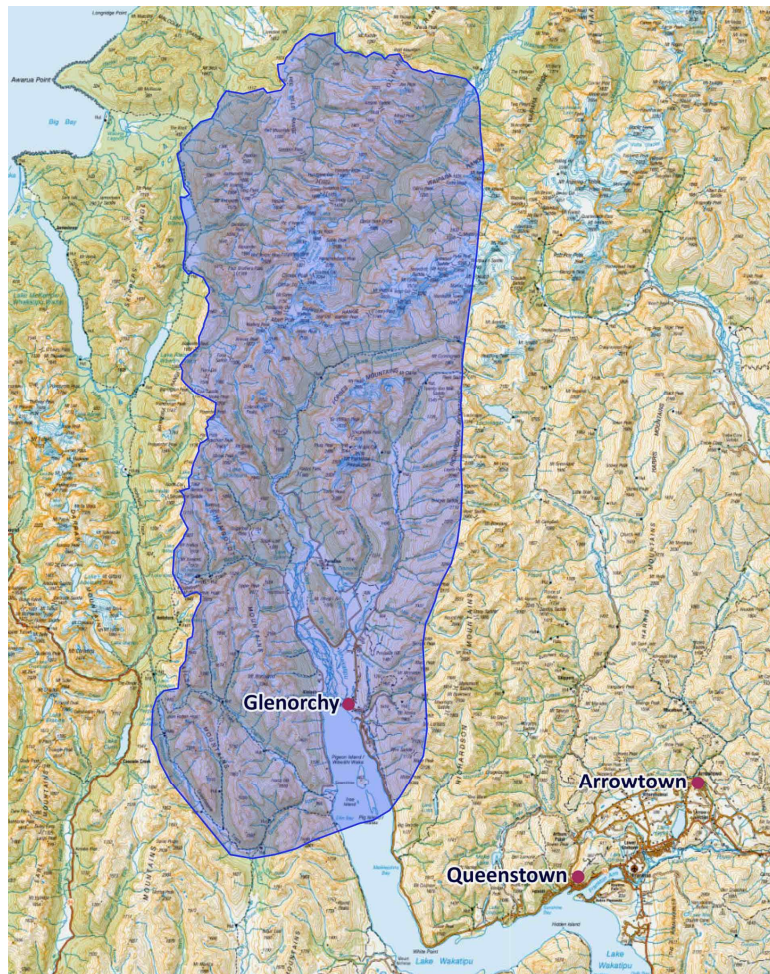


# Tāhuna Glenorchy Application Winterstellar Astronomical Site

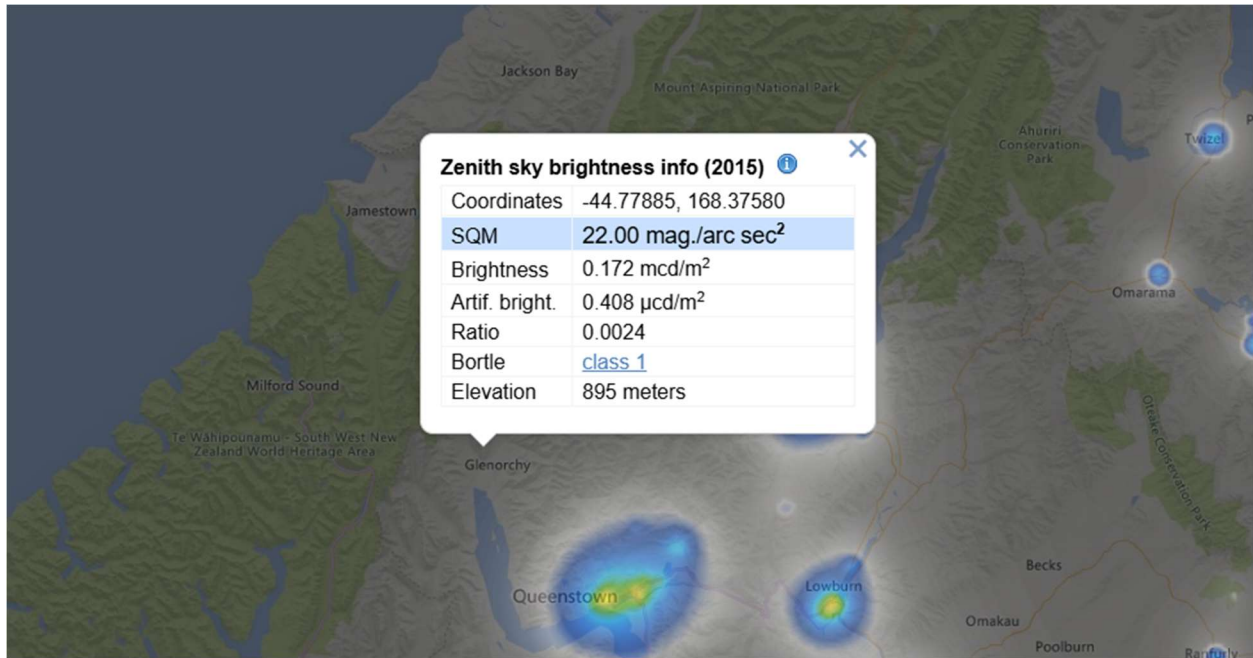
## Proposed Boundaries:

The proposed Tāhuna Glenorchy Winterstellar Astronomical Site encompasses 215,000 ha of land from Bennett's Bluff to the South, the tops of the Richardson and Humbolt Ranges to the East and West and the Northern Boundary of Mt. Aspiring National Park to the North. Situated largely within the Te Wāhipounamu UNESCO World Heritage Site in Tititea Mt. Aspiring National Park, it offers visitors outstanding dark skies and a wide variety of opportunities to access and learn about the dark skies. Over 160,000 ha of the project area (more than 75%) falls within World Heritage.



## Night Sky Brightness

Our project area does not exceed 0.2 millicandela/ $m^2$  as shown by the map below from <https://www.lightpollutionmap.info/#zoom=7.85&lat=-44.7040&lon=168.3361>.



### **Commitment to Advance Program Aims**

The Tāhuna Glenorchy Dark Skies Group is committed to recognizing and promoting Dark Sky areas in Otago. In May 2024 we submitted an application to DarkSky International to become a Dark Sky Sanctuary and await our outcome. We feel strongly that it is important to be part of a local network and to work collaboratively with iwi and other Otago communities to share knowledge and creative ideas for engaging a wider community in care for our skies.

### **Public Outreach Program**

We're fortunate to have the support of QLDC libraries this year to support a collaboration with the Otago Museum in an outreach program called Silver Science. They'll be doing three programs from Sept-November where they'll bring the pop-up planetarium to do a program for the school and also for the silver-haired of GY. They'll follow up with a program on Solar Tsunami's and a final one on the Physics of Light.

### **Program to Improve Existing Outdoor Lighting**

We would like to develop some materials for the community on what they can do in their own households to support our Dark Skies. We'll also be working on a program for local businesses offering to do audits for them in return for a badge they can put on their websites and advertising that they're "Dark Skies Friendly."

### **Support Letters**

We attach letters of support that were garnered for our Dark Sky application and show iwi, Glenorchy Community Association and Queenstown Lakes District Council support.

For more information, please feel free to contact:  
 Leslie Van Gelder ([Leslie.vangelder@gmail.com](mailto:Leslie.vangelder@gmail.com))